



## COURSE TUTORS

The Department of Forensic and Medical Art at the University of Dundee is a dynamic collaboration between the the School of Life Sciences and the Duncan of Jordanstone College of Art. Set up in October 2005 it is a centre of expertise for both the practice and tuition of Forensic Facial Reconstruction.

**Dr Caroline Wilkinson** is an experienced practitioner of facial reconstruction and author of *Forensic Facial Reconstruction*. She holds the post of Senior Lecturer in Forensic Anthropology and specialises in the reconstruction of juvenile remains. She has also developed a computerised method of facial reconstruction utilising the latest technology in virtual sculpture techniques.

**Prof. Sue Black** is head of Anatomy and Forensic Anthropology at the University of Dundee. She is a leading forensic anthropologist and co-author of *Developmental Juvenile Osteology* and *The Juvenile Skeleton*. She has been awarded an OBE for her work with war crimes investigations in Kosovo.

Other tutors include **Caroline Needham**; a forensic artist and specialist in skull casting, and **Christopher Rynn**; a practitioner and researcher in the field of facial reconstruction.

## Facial Reconstruction - Manual and Computerised

A one week residential course for continued professional development



1 - 8 July 2007



The course will be held in the School of Life Sciences at the University of Dundee, with accommodation provided by the West Park Conference Centre.

The fee of £2,200 per delegate will include:

- Seven day professional course.
- Seven nights bed and breakfast accommodation.
- Welcome reception and buffet.
- Formal end of course dinner.
- All materials.

Dundee is located on the picturesque East coast of Scotland and is within a 90 minute drive of both Edinburgh and Glasgow.



## COURSE CONTENT

This course is for the continued professional development of practitioners in facial reconstruction. The course has a maximum of 10 places and runs for a full seven days.

### Skull Assessment (Day 1)

The determination of facial morphology, age, sex and ancestry from the skull. This will include new methods developed from recent research and will be tutored by Prof Black and Dr Wilkinson.



### Skull Casting (Day 2)

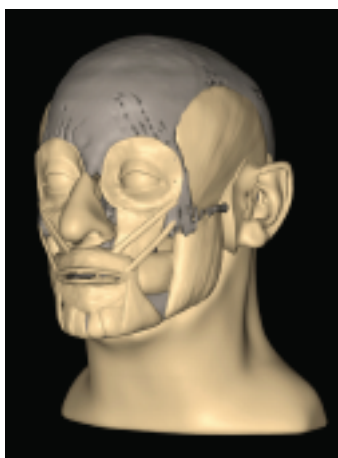
A practical workshop in mould making and casting of the human skull, tutored by Caroline Needham.

### Facial Anatomy Sculpture (Day 3)

Each student will produce a 3D reconstruction of facial anatomy. The workshop will include demonstrations by Dr Caroline Wilkinson and Chris Rynn. Anatomical specimens will be available throughout.

### Facial Sculpture (Day 4)

Each reconstruction will be finished to depict the individual appearance during life. The workshop will include demonstrations by a local portrait sculptor.



### Juvenile Reconstruction (Days 5 & 6)

These two days will include a tutorial discussing the problems associated with juvenile facial reconstruction by Dr Caroline Wilkinson, followed by a workshop where each student will produce a facial reconstruction of a juvenile skull.

### Seminar (Day 7)

The final morning will be available for finishing touches. There will also be an opportunity to discuss the week's events and to answer queries. The course will finish at 1pm.

There will be a formal dinner and paper presentations at the end of the last full day.

## Facial Reconstruction

The following methods will be available to study:

### Clay Based Reconstruction

Involves the sculpture of facial muscles and other soft tissues onto a cast of the skull in clay. Utilises traditional sculpting techniques and materials.



### Computer Based Reconstruction

Involves the sculpture of facial muscles and other soft tissues onto a three dimensional scan of a skull. Utilising the latest in Haptic Feedback technology you can actually 'feel' the virtual clay as you work.



For further details please contact Caroline Needham on:  
Tel: 01382 388627  
email: cdneedham@dundee.ac.uk

## APPLICATION FORM

Professional Facial Reconstruction Course  
July 2007

Title: .....

Name: .....

Position: .....

Affiliation: .....

Address: .....

Country: .....

Code: .....

Tel: .....

Fax: .....

Invoice Address: .....

Country: .....

Code: .....

Please specify which method of reconstruction you would like to learn:

Clay ☐ Computerised ☐

Please post to:

Dr Caroline Wilkinson  
Senior Lecturer in Forensic Anthropology  
School of Life Sciences, MSI/WTB Complex  
University of Dundee, Dow Street, Dundee. DD1 5EH. UK.

Please include a CV and facial reconstruction references. If your application is accepted you will be invoiced for the course fee of £2,200.